

OVERVIEW

Degree

- Master of Arts (M.A)

Duration

- 3 semesters (1.5 yrs)

Start

- Annually in October (the winter semester)

Admission requirements

Phase 1: Formal Criteria

- Bachelor degree with min. 180 ECTS in areas of health, medicine, medical computer science or any other degree related to health
- Minimum 2 years work experience, part time can be credited

Phase 2: Admission Test

- Section A: written test
- Section B: interview

Language of instruction

- English

APPLICATION

Application period

- 15 April - 15 July

Online application

- In the Primuss portal at www.th-deg.de/en/apply

Deadline for submission of required documents

- 27 July

Notice of acceptance or denial

- In the Primuss portal until mid August

Enrolment

- Information available in the letter of admission

Late placement for open study places

- Via waiting list

Prep courses

- See www.th-deg.de/prep-courses (no obligation)

Semester start

- 01 October

STUDY LOCATION

European Campus Rottal-Inn

Max-Breiherr-Strasse 32
84347 Pfarrkirchen
Germany



www.th-deg.de/en/ecri-campus

CONTACT

Are you interested in studying for this Master course in Global Public Health and would like to find out more? Please direct all enquiries to:

welcome@th-deg.de

www.th-deg.de/en/advice



Technische Hochschule Deggendorf/ Deggendorf Institute of Technology

Dieter-Görlitz-Platz 1
94469 Deggendorf, Germany
Tel. +49 (0)991 3615-0
Fax +49 (0)991 3615-297
info@th-deg.de
www.th-deg.de/en

[f /HochschuleDeggendorf](https://www.facebook.com/HochschuleDeggendorf)

[@ /th_deggendorf](https://www.instagram.com/th_deggendorf)

[/TH_Deggendorf](https://twitter.com/TH_Deggendorf)

[/THDeggendorf](https://www.youtube.com/THDeggendorf)



© DIT Marketing Department 04.2023

MASTER GLOBAL PUBLIC HEALTH

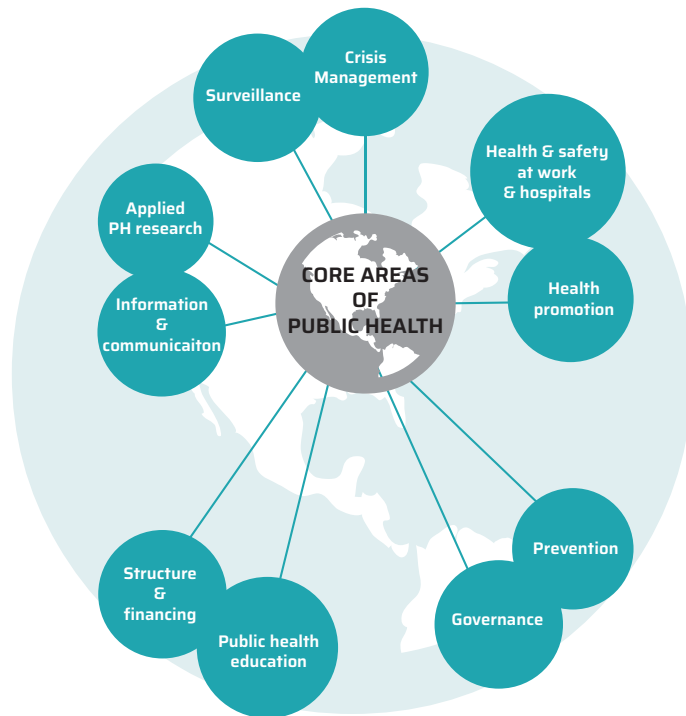


DEGREE DESCRIPTION

This postgraduate course in Global Public Health is designed to enable you as a graduate of international healthcare to meet modern, multidisciplinary requirements in a globalised, dynamic healthcare system. You will learn how knowledge in Global Public Health is managing and promoting health, in addition to preventing illness. The course focuses on public health in industrialized as well as in developing areas of the world, as you will explore major global health problems and their relation to culture, politics, human rights and ethical values.

These topics are explored in more depth during the winter and summer school at the European Campus in charming Lower Bavaria close to the Austrian border.

On graduation, top students will have gained the theoretical foundation to enable future doctorate studies or work in scientific fields.



COURSE CONTENT

The following structure and content is designed to take advantage of the potential for innovation within the growing tourism sector.

Suitable applicants are:

- Graduates of medicine, health policy and academic research
- Healthcare professionals who want to improve health globally and broaden their knowledge of how to reach Sustainable Development Goals by 2030

Semester 1 all lectures held online	Essentials of Global Public Health <ul style="list-style-type: none"> • Global Health Systems, Policy and Trends • Public Health Nursing and Health Impact Digital Health <ul style="list-style-type: none"> • Digital Health and IoT • Principles of Software Engineering Sustainable Health Economy <ul style="list-style-type: none"> • One Health and Sustainability • Health Impact and Health Economy Electives
--	---

SUMMER SCHOOL AT DIFFERENT PLACES

Semester 2 all lectures held online	Global Public Health Law and Ethics <ul style="list-style-type: none"> • Global Public Health Law • Compliance, Risk Management and Ethics Epidemiology and Health Data Analytics <ul style="list-style-type: none"> • Epidemiology • Health Data Collection and Analytics Universal Health Coverage <ul style="list-style-type: none"> • Policy and Governance • Controlling & Fund raising Electives
--	--

WINTER SCHOOL AT THE EUROPEAN CAMPUS, GERMANY

Semester 3	<ul style="list-style-type: none"> • Master Thesis • Research methods & writing skills (held online)
------------	--

All lectures and exams are conducted in English, therefore fluent English skills are crucial for all students.

COURSE AIM

The aim of the Global Public Health course is to impart the specific skills required for public health on a global manner.

The course is aimed at students who see their future professional activities in planning, developing and consulting in global companies, insurance companies, national health institutions as well as international organizations (e.g. UNDP, UNFPA, WHO). In addition, the program enables an academic career in science and research and lays a foundation for further doctoral studies.

Due to the interdisciplinary orientation of the Master programme, students are optimally picked up in their heterogeneous working environment in practice and strengthened in the interdisciplinary network.

CAREER PERSPECTIVES

After successfully completing this postgraduate degree, expect to build your career in sectors including:

- Governments
- NGO's
- Consultancies
- International organisations (e.g. UNDP, UNFPA, WHO)
- Healthcare management
- Health promotion
- Human resource management
- Administration
- Marketing and controlling
- Occupational healthcare

